



eware

Your solution to material supply and management

eware

Ensuring materials are delivered on schedule, correctly specified and efficiently managed is a key ingredient in any successful mailing campaign. Melbourne Mail Management has

invested heavily in remaining at the industry forefront by providing our clients all the necessary tools and services to order, store and track their materials efficiently and headache free.



Online tracking and reporting

Melbourne Mail Management provides its clients the facility to view stock levels 24 hrs a day, 7 days a week, via our online warehouse. Users can log

in to their account through our website and view their inventory. In addition, a campaign transaction listing may be printed outlining material usage.

Storage

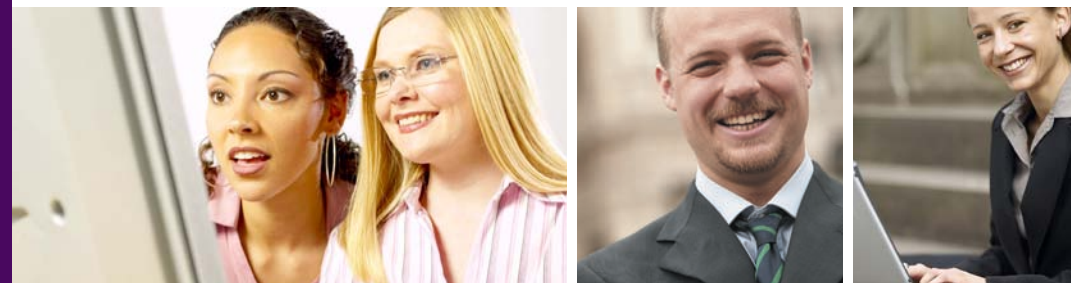
Melbourne Mail Management's warehouse is ready to receive any size delivery of materials used for your campaigns. Our warehousing team will receive and reconcile the

delivery, then store away for future retrieval. Providing off site secure storage of materials also helps to enable us to quickly process those urgent campaigns.

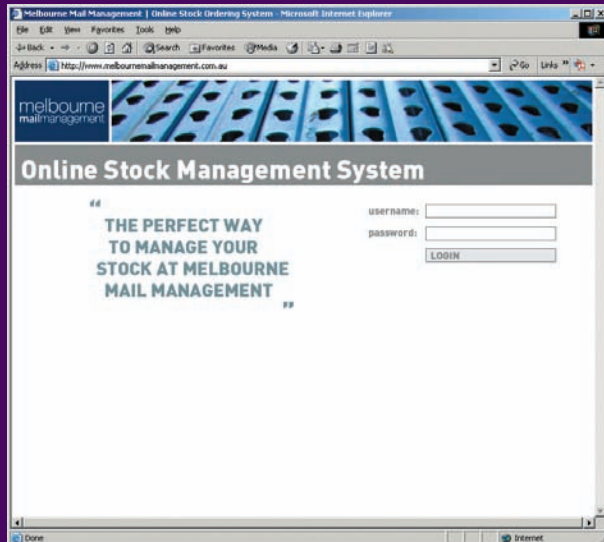
Print management

Melbourne Mail Management provides a complete range of print management services that enable quick and accurate turnaround of

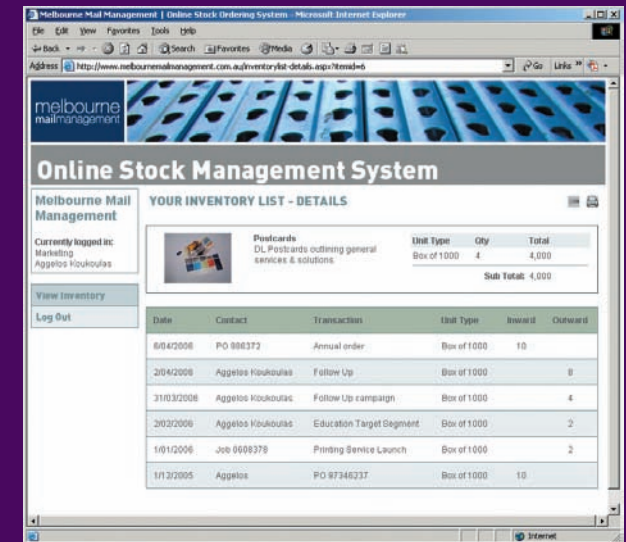
materials. Our experience in the print industry enables us to provide our clients finely printed and cost effective materials.



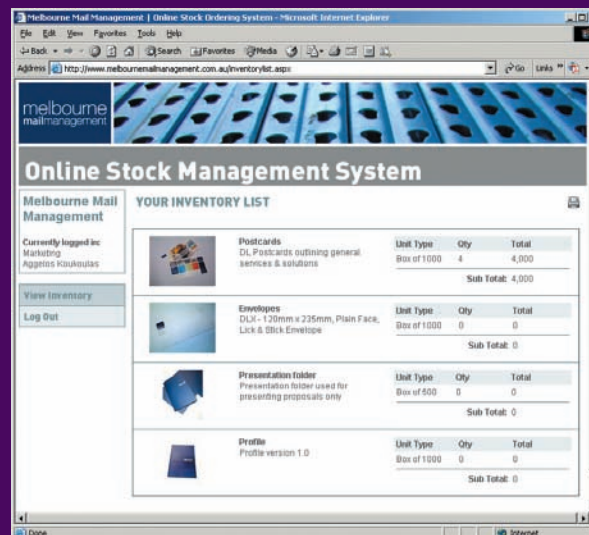
Overview...



- Digital photos of each product for easy identification
- Summary page of all materials and stock levels
- Instant notification of minimum stock levels for re-ordering



- Instant 24/7 access
- No waiting for replies or stock takes
- Off site storage reducing your overhead costs



- Transactional report of usage on a per product basis
- Multiple accounts and users can be setup
- Tracking of materials on a per account basis